

Be Aware of

- ▶ A few tight turns and steep hills on ski trails.
- ▶ Ski all trails in a clockwise direction.
- ▶ Trail (not labelled on map) heading south into Biathlon area is for summer use only.
- ▶ Possible bear encounters in summer-fall.

Trail Maintenance

The Cariboo Ski Touring Club relies on the work of volunteers, donations and memberships to maintain the Hallis Lake trail network and facilities. Please help the Club maintain this high caliber facility by making a donation (donation box in lodge) or becoming a member.



Looking west to Dragon Lake from viewpoint - Loop 7

For more information on the Cariboo Chilcotin Adventure Guides, including additional trail maps, check out:

[Http://www.cariboocountry.org](http://www.cariboocountry.org)

and click onto the maps homepage.

At a Glance

The Hallis Lake ski trails have been developed and are maintained by the Cariboo Ski Touring Club. These extensive and well maintained multi-use trails are located in a snowbelt, east of Quesnel and offer high quality skiing on national standard nordic trails (2.5 km lighted trail). In the summer and fall, Hallis Lake is a great place for family hiking, biking, or walking.

Trail Length: 2.5 km, 5 km, 7.5 km, 10 km touring loops
15 km and 32 km long touring/marathon loops

Elevation gain: ± 180 m overall

Snowpack: .75 to 1.5 meters

Ski Season: Late November into April

Each trail loop has been rated for nordic skiing by the Cariboo Ski Touring Club according to generally recognized standards. Racing trails meet CSA/FIS requirements. Trails should be considered 'easy' for summer hiking and biking.



Trailhead

The Hallis Lake trail network is located 14.5 km from Quesnel. Travel south via Hwy 97 to the Hydraulic Road turn-off (Franks Supermarket) and continue for 9.5 km. Turn left at Hallis Lake, where the pavement turns to gravel and continue for .8 km on the access road to the lodge and parking. Turn right onto the access road and continue a short distance, following signs to the day lodge and parking area.

Trail Description

The Hallis Lake trails offer fun and challenging skiing for all levels of skiers, as well as extensive 'non-motorized' recreation opportunities during the summer. Facilities include a new day lodge, large parking area, biathlon training area, downhill practice area, and a lighted track. Most loops have been designed in increments of 2.5 km. Touring trails are regularly trackset.

Easy: Loops 1 / 2

These trails are suitable for family and beginners and have gentle grades. The trails are also near the lodge and offer night skiing. Loop 1 is completely lit for night skiing and winds through the Biathlon area and along Hallis Lake.

Intermediate: Loops 3 / 4 / 5 / 6

These trails form the heart of the Hallis Lake trails. Most loops offer viewpoints and extend through different forest types for variety of scenery.

Expert: 7.5 km loop

The expert loop at Hallis Lake offers some steep hills and tight corners. A viewpoint on the west side of this loop provides very nice views of Dragon Mountain and Dragon Lake.

Marathon Course: 32 km (16 km loop completed twice)
Mainly intermediate long distance touring. Race held annually in early January.

Hallis Lake Multi-Use Trails

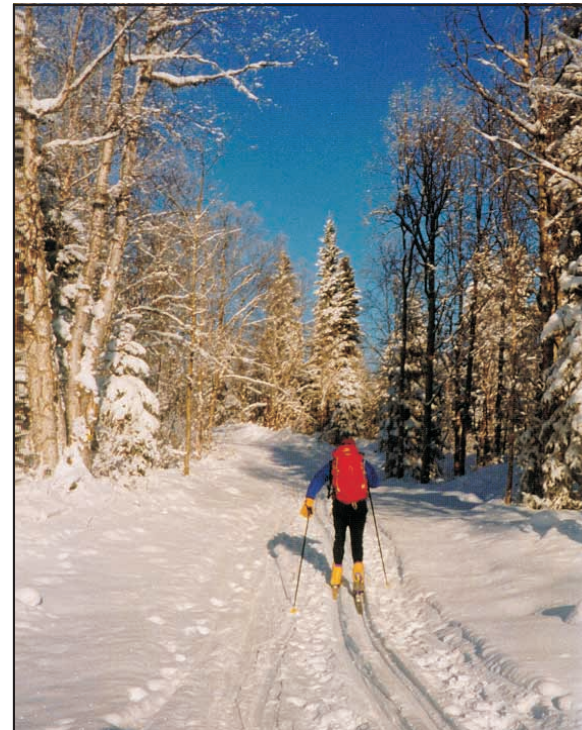
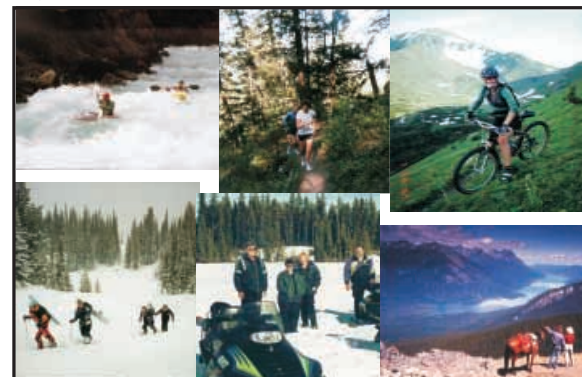


Photo courtesy Ron Watteyne

Map and Trail Information

Cariboo Chilcotin Adventure Guides Spring/99 series



Regional Overview



Trail Ethics - Skiing and Mountain Biking

- ▶ Follow signs on trail (ski in clockwise direction).
- ▶ After a fall or deciding to stop on track set trails, step out of the track and others skiers pass.
- ▶ Descending skiers have right of way on steep sections of trail.
- ▶ Bikers - stay on existing trails, control your bicycle, and watch for hikers and equestrians.
- ▶ Bikers - slow down when passing others or stop. Anticipate other around corners or in blind spots.
- ▶ Please don't litter - pack out what you pack in.

The authors of the Cariboo Chilcotin Adventure Guides have tried hard to provide up to date, accurate information. However, no guide is perfect and no responsibility is accepted for any discrepancies or lack of precision. Also, users of the Cariboo Chilcotin Adventure Guides agree to waive any and all claims against the authors and staff for personal injury or mis-adventure while undertaking any outdoor recreation activity. Make sure you evaluate your ability in relation to the risks and challenges. Be prepared for weather changes, bring first aid gear, go with a friend(s), and leave a copy of your trip plan with someone you trust.

Ambulance: 992-3211 Police: 992-9211
Cariboo Ski Touring Club: 992-2855

