

## Cariboo Chilcotin Adventure Guides Spring/99

## Mt Agnes Trail Network

Rec Use:  
Rating:



### At a Glance

The Wells-Barkerville area in the Cariboo Mountains offers an extensive network of signed summer and winter trails. In addition to the interpretative center in the Barkerville Historic Townsite, visitors have an opportunity to follow the steps of the Gold rush miners on a variety of historic trails and routes.

Elevation gain ± 760 meters Barkerville Townsite to Mt Agnes

The outdoor recreation ratings for the Adventure Guides have been developed through a combination of generally recognized standards for activities such as biking, hiking, kayaking, and local knowledge.



### Trailhead:

The main access point for trails in the Barkerville is the Historic Townsite. The Townsite offers a large parking area. A variety of accommodation is available summer and winter at Barkerville and in Wells.

The community of Wells is an alternative access point for summer and winter snowmobile trails which connect with the trails leading from Barkerville to Mount Agnes and Bald Mountain. The Wells and Area Trails Society has erected signs in Wells which point to the trail head.

### Trail Description

The Wells and Area Trails Society (WATS) and Friends of Barkerville (FOB) have been active for many years in trail development, maintenance and signing. WATS signs are wood, mounted on wood posts. FOB signs are painted (yellow letters) steel on steel posts. Please keep in mind that not all trails shown on this map are signed. You will need some basic navigational skills and aids, especially in the alpine areas of Mount Agnes and Bald Mountain. Also, keep in mind that in winter, short parts of some trails are shared by snowmobilers and skiers.

**Groundhog Lake Hiking Trail:** ± 7.5 km Barkerville to lake  
Beginning at the historic townsite, follow the original 'Cariboo Waggon Road' past Richfield Courthouse for a further 1.5 km to intersect with the Goldfields Ditch (winter snowmobile trail). Continue another .5 km along the road to a meadow and Summit Rock, a famous landmark signifying the end of adverse grades for freight wagons. From this point the trail leaves the Waggon Road and crosses a meadow to the left. On the far side of the meadow the Powderhouse hiking trail branches off and heads up to the alpine. The Groundhog Lake trail (to Mt Agnes) turns right onto an old mining ditchline and continues at constant elevation for about 2 km. The ditch then rejoins the mining road at Coopers Cabin (look for remains of old ditchkeepers cabin on the left). The trail continues up Jack of Clubs creek for a short distance, crosses the creek and heads up Groundhog creek, leading to the lake. Follow the trail through through alpine meadows to the lake and the ski-snowmobile cabin. The trail continues behind the cabin, becoming the Mt Agnes Traverse as it climbs through a pretty pass to Barbara Lake and around the east shoulder of Mt Agnes down to a saddle between Mt Agnes and Bald Mtn. From this point the trail continues up to the meadows on Bald Mtn for great views in all directions.

**Stanley Waggon Road:** ± 15 km Summit Rock to Stanley  
Only the junction near Summit Rock shown on map. This historic route for freight wagons coming into Barkerville from Quesnel and the ghost town of Stanley is now a hiking trail following the remains of the over-grown freight road (foot traffic only). The section of trail near Stanley is in poor condition due to recent mining activity.

**Groundhog Lake Ski Trail** (see above for more complete info):  
Follows Groundhog Lake hiking trail from Barkerville townsite to the first junction with ditchline. Turn left onto the ditchline and continue for 300 meters. The trail then turns and climbs up the creek for about .5 km to the meadow at Summit Rock. Continue along the east side of the meadow to the intersection of the Powderhouse and Groundhog Lake trails (snowmobile trail on west side of meadow). Continue along the hiking trail as it turns along the ditchline for 2 km (as noted above) to Coopers Cabin. From this point, the trail is multi-use in winter. After reaching Groundhog Lake, skiers can cross the dam at the north end and climb the saddle between Mt Agnes and Elk Mountain- continuing to a great ski touring meadows on Elk Mountain.

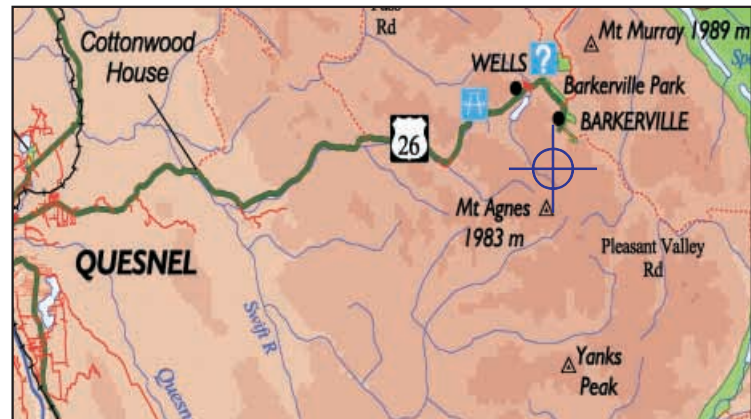
**Powderhouse Trail:**  
Hiking trail which leaves from Summit Rock (see above). Trail climbs very steeply for about 1.5 km before leveling off at along the upper shoulder of Bald Mountain. After reaching the meadows on Bald Mountain, links can be made with the Mt Agnes and Bald Mtn Traverses.

**Bald Mountain Traverse:**  
This route is a 'short-cut' to the Gold Rush Pack trail from the Groundhog Lake Traverse, over the top of Bald Mtn. This route may not be signed.

**Proserpine Traverse:**  
Another 'short-cut' connecting trail from the Groundhog Lake Traverse to the Gold Rush Pack trail. The trail starts on the north flank of Bald Mtn and provides a shorter access to the portion of the Pack Trail heading north to Barkerville.

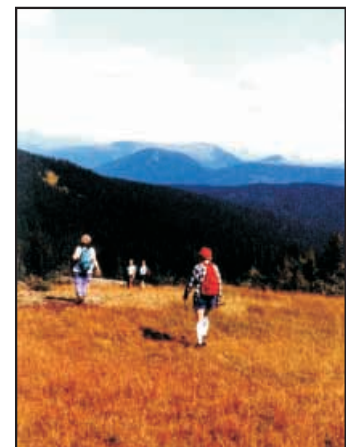
**Goldrush Pack Trail:**  
Original direct route for miners hiking into the goldfields from Keithley Creek - rich with history. FOB have re-opened this route and signed the trail. The trail crosses many areas of historic and current mining activity. The FOB are working on establishing interpretative sites along the route. From Richfield Courthouse, cross Williams Creek and follow trail signs up to the west side of Proserpine Mountain. Once in the alpine, links can be made with the Groundhog Lake and Bald Mtn Traverse. A long day hike option exists to loop down to Barkerville via the Groundhog Lake Trail. Continuing south on the Pack Trail to Keithley Creek would require camping and logistics for possible pickup and return to Barkerville. **Warning:** Be prepared for very wet trail conditions, even in August.

### Regional Overview Map:



### Be Aware of..

- ▶ Rapidly changing weather conditions (Interior Wet Belt) in all seasons. Snow in the middle of August is quite possible, as well as fog or low cloud at high elevations.
- ▶ Remote wilderness nature of area
- ▶ Potential for bear encounters
- ▶ Avalanche hazard in all alpine areas. Essential for snowmobilers and backcountry skiers to have avalanche hazard assessment and route selection skills. Be equipped with avalanche beacons, shovels, probes, etc.
- ▶ Natural hazards on all ski, snowmobiling, and hiking terrain.
- ▶ Only some trails signed. Bring a compass, altimeter, and NTS 1:50,000 maps 93 H 3,4.
- ▶ Snowmobilers should avoid ski touring area near Elk Mtn.



Above Left: Hiking on the Goldrush Pack Trail - looking north  
Above Right: Hikers exploring alpine meadows on Bald Mountain.

### Trail Description Continued...

**Proserpine Snowmobile Trail:**  
From the Barkerville parking lot, cross the bridge to the east and climb up the Proserpine mining road. After a short distance, look for a sign directing you to turn right. The trail then drops down into Conklin Gulch. After crossing the Gulch, the trail begins a steady climb up the east side of the Williams Creek valley until reaching the subalpine at Mount Proserpine. Only advanced riders with **avalanche assessment skills** should proceed beyond Mount Proserpine. Continue through a series of meadows to eventually traverse to the open alpine on Bald Mtn (high hazard area). The trail continues down the west shoulder of Bald Mtn and down into the Jack of Club's Creek valley via the Proserpine Connector. This is a steep **'one-way'** route for advanced to expert riders. Trail follows the west side of the creek eventually crossing over and intersecting with the snowmobile trail to Groundhog Lake.

**Groundhog Lake Snowmobile Trail:**  
From Barkerville townsite, follow signs to Stouts Gulch and connect to the Goldfields ditchline. Follow the ditchline to the Cariboo Waggon Road. Just before Summit Rock, the option exists to branch west to Wells over Cow Mountain (off map) on snowmobile trail offering excellent viewpoints. The main route continues on the Cariboo Waggon Road and connecting mining road to Groundhog Lake. Do not turn up the Proserpine Connector (one way down only). From Groundhog Lake, return to Barkerville the same way - connecting route to Bald Mtn from the west is not feasible.

The authors of the Cariboo Chilcotin Adventure Guides have tried hard to provide up to date, accurate information. However, no guide is perfect and no responsibility is accepted for any discrepancies or lack of precision. Also, users of the Cariboo Chilcotin Adventure Guides agree to waive any and all claims against the authors and staff for personal injury or mis-adventure while undertaking any outdoor recreation activity. Make sure you evaluate your ability in relation to the risks and challenges. Be **prepared** for weather changes, bring first aid gear, **go with a friend(s), and leave a copy of your trip plan with someone you trust.**

All Emergencies: 911  
Call the Wells Museum for more info: (250) 994-3422

